

Lake Shore Boulevard East Project Construction Notice



Lake Shore Boulevard East Project

Waterfront Toronto will complete some elements of the City of Toronto's Gardiner Expressway and Lake Shore Boulevard Reconfiguration as part of the Port Lands Flood Protection project. This new project is called Lake Shore Boulevard East and involves:

- Removing the Logan Ramps at the east end of the Gardiner Expressway
- Widening and lengthening the Lake Shore Bridge over the Don River
- Rebuilding the roadway between Don Roadway and Carlaw Avenue, including new bike facilities

Schedule

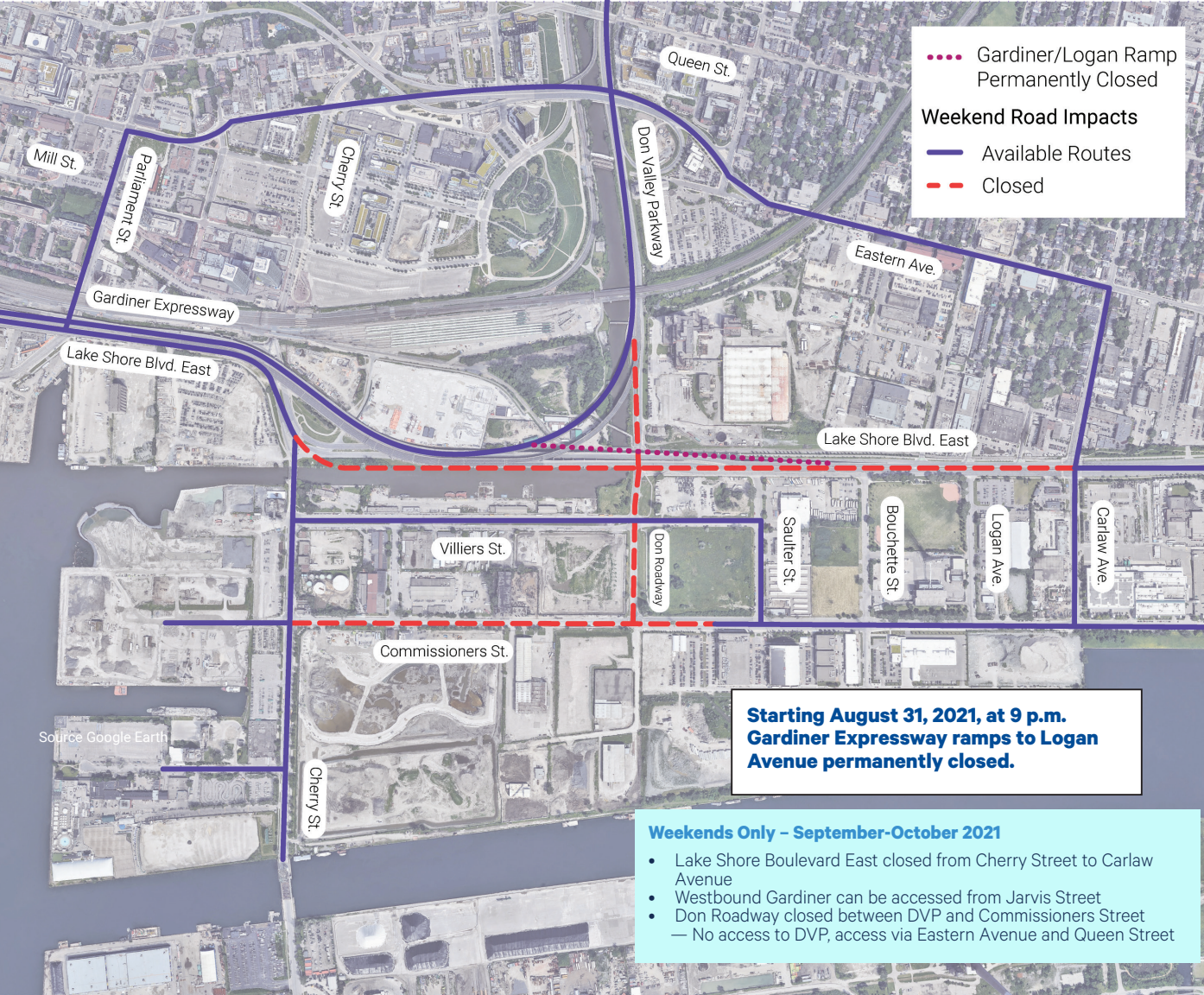
Construction starts August 31, 2021, at 9 p.m. with the removal of the physical Gardiner ramps to Logan Avenue. Concrete breaking/crushing work will happen only on weekends between the hours of 7 a.m.-11 p.m. This is scheduled for completion in October 2021. Work will then start on Lake Shore Boulevard in November 2021. Lake Shore Boulevard East is not expected to close again once the Gardiner ramps are removed. Construction will be complete in 2024.

What to Expect

- On weekends from September-October 2021, Lake Shore Boulevard East will be closed from Cherry Street to Carlaw Avenue while the ramps from the Gardiner to Logan Avenue are being removed.
- Expect noise during weekend work (see reverse side for details).
- Cyclists wishing to cross the Don River will be diverted to bike routes/detours on Cherry, Commissioners, and Villiers Streets and Carlaw Avenue.

To sign up for our newsletters and digital notices, email info@waterfronttoronto.ca

For the latest construction updates, check PortLandsTO.ca/Construction
Questions or concerns? Email plfp@ellisdon.com or call 416.594.2198 or scan the QR code to access our online form.



Source: Google Earth

Weekends Only - September-October 2021

- Lake Shore Boulevard East closed from Cherry Street to Carlaw Avenue
- Westbound Gardiner can be accessed from Jarvis Street
- Don Roadway closed between DVP and Commissioners Street
— No access to DVP, access via Eastern Avenue and Queen Street

**Starting August 31, 2021, at 9 p.m.
Gardiner Expressway ramps to Logan
Avenue permanently closed.**

Lake Shore Boulevard East Project – Gardiner Ramp Removal | Noise, Dust and Vibration Levels During Weekend Work

Removing the on/off ramps from the Gardiner Expressway to Lake Shore/Logan Avenue will involve heavy concrete breaking, jackhammering and crushing.

The nearest residential neighbourhoods that may hear the noise are:

- The Studio District, bound by Logan Avenue in the west, Carlaw Avenue in the east, Eastern Ave to the north, and Lake Shore Boulevard in the south. This area is approximately 250 metres away from noise-generating work.
- The West Don Lands/Canary District, bound by Cherry Street in the west, Bayview Avenue in the east, Eastern Avenue to the north, and Mill Street to the south. This area is approximately 550 metres away from noise-generating work.
- The Distillery District, bound by Parliament Street in the west, Cherry Street in the east, Mill Street in the north and Lake Shore Boulevard in the south. This area is approximately 695 metres away from noise-generating work.

Timing:

Noise-generating work will take place from 7 a.m. to 11 p.m. on Saturdays and Sundays in September and October 2021. Please note these dates are anticipated based on current information, and subject to change due to changes in construction schedule, weather, or unforeseen circumstances.

Managing Impacts:

- At the beginning and end of each shift, equipment operators will clean, lubricate and inspect machines to help reduce noise.
- All construction equipment on-site will have an exhaust muffler to suppress sound.
- Reverse beacons ensure worker safety. Every effort will be made to secure and use equipment with lower volume devices to minimize beeping noise.
- Any work outside of 7 a.m. - 11 p.m. will be limited to clean-up of the Gardiner concrete sections, steel beam removal, and general non-crushing activities and other low-noise-production work.
- Crews will use water trucks to control dust and mud.

We recognize the challenges and inconveniences construction presents to local communities. While some construction projects cannot be changed or delayed, we minimize impacts as best we can. Here are some of the ways we're reducing construction impacts for the Lake Shore Boulevard East project:

- Coordinating with the City of Toronto and outside agencies such as Metrolinx and Toronto Hydro to identify their construction needs and avoid overlapping road closures
- Changes to lane configuration and traffic signal timing to keep traffic moving
- Reconstruction at certain intersections and ramps to the Gardiner Expressway to improve the flow of traffic during construction

Contact Us:

Feedback from residents and local businesses before and during construction is of utmost importance. If you have any concerns regarding noise levels, please let us know by emailing plfp@EllisDon.ca, calling 416.594.2198, or scan the QR code to access our online form.

